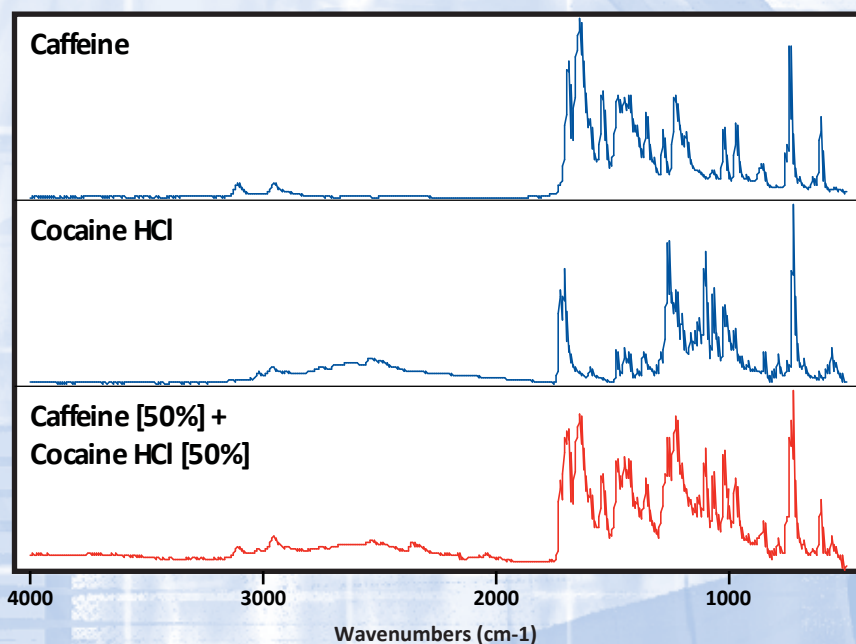


FDM ATR Drug Mixtures

For prescreening unknown drug samples

- More than 845,000 spectra
- Easily ID mixtures
- Fast
- Semiquantitative results
- Calibration free
- Saves time and money



2 components, 10% increments

Caffeine [10%] + Cocaine HCl [90%]
Caffeine [20%] + Cocaine HCl [80%]
Caffeine [30%] + Cocaine HCl [70%]
Caffeine [40%] + Cocaine HCl [60%]
Caffeine [50%] + Cocaine HCl [50%]
Caffeine [60%] + Cocaine HCl [40%]
Caffeine [70%] + Cocaine HCl [30%]
Caffeine [80%] + Cocaine HCl [20%]
Caffeine [90%] + Cocaine HCl [10%]



Fiveash Data Management, Inc.

608-236-9145

www.fdmspectra.com

Fax: 608-236-9170